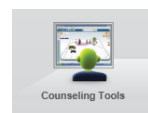
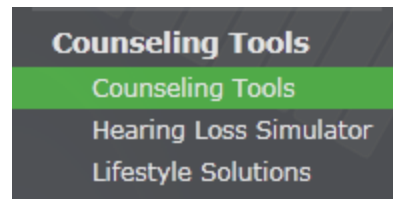


## Counseling Tools: Lifestyle Solutions and Hearing Loss Simulator

Inspire includes two pre-fitting Counseling Tools: Hearing Loss Simulator and Lifestyle Solutions. Lifestyle Solutions is a patient questionnaire available for all Mobility and Focus fittings. Hearing Loss Simulator demonstrates the effects of a hearing loss using a variety of sounds and audiogram presets. Different display options, visual aids and drawing tools are included to help facilitate patient understanding of the impact of hearing loss on specific environmental and speech sounds. These tools can be accessed through Counseling Tools from the icon on the Get Started screen or the left navigation bar.

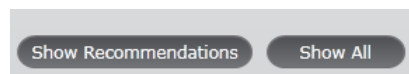


### Step-by-Step Process (Lifestyle Solutions)

- 1) Click the Counseling Tools icon.
- 2) Click the Lifestyle Solutions icon.
- 3) Complete the questionnaire with the patient and significant other. Remember to ask the patient how much he or she would like to participate in these activities, not about his or her current participation.
- 4) Click either Show Recommendations or Show All.

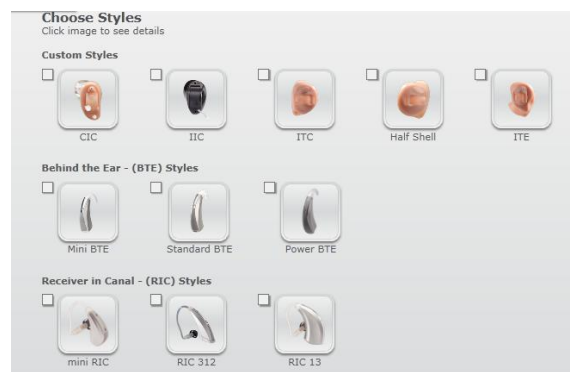


The Show Recommendations button will display all available technology levels and highlight the most appropriate levels. Show All displays all available products, without indicating a product preference.



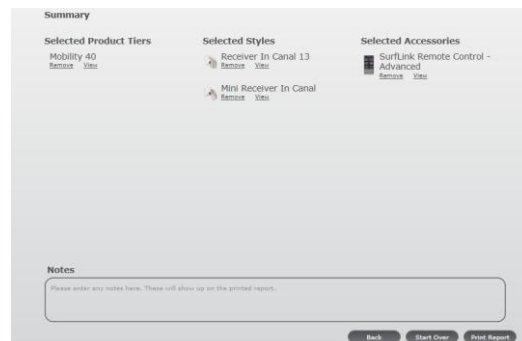
### Lifestyle Solutions: Style Selection

The Styles screen will display all available styles.

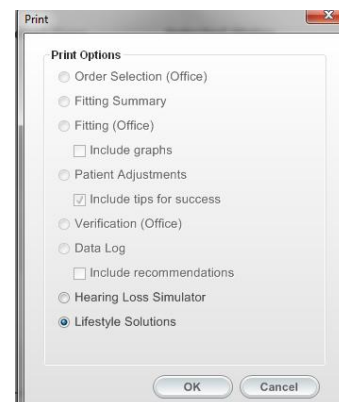


## Lifestyle Solutions: Recommendations and Report

Recommended technology levels, styles and features will be listed on the **Show Summary** screen. The page also includes a **Notes** section that can be customized for each patient and will be displayed on the printed report.



The provided information can also be printed through selecting **Lifestyle Solutions** from the **Print Report Menu**.



## Step-by-Step Process (Hearing Loss Simulator)

- 1) Click the **Counseling Tools** icon.
- 2) Click the **Hearing Loss Simulator** icon.
- 3) Click on **Patient, Normal, or Preset** audiogram.
- 4) Choose **Overlays** to add any of the following to the audiogram: **Common Sounds, Speech Sounds, Speech Spectrum, Articulation Index** or **Severity of Loss**.
- 5) Use **Drawing Tools** to help explain audiogram to the patient.

