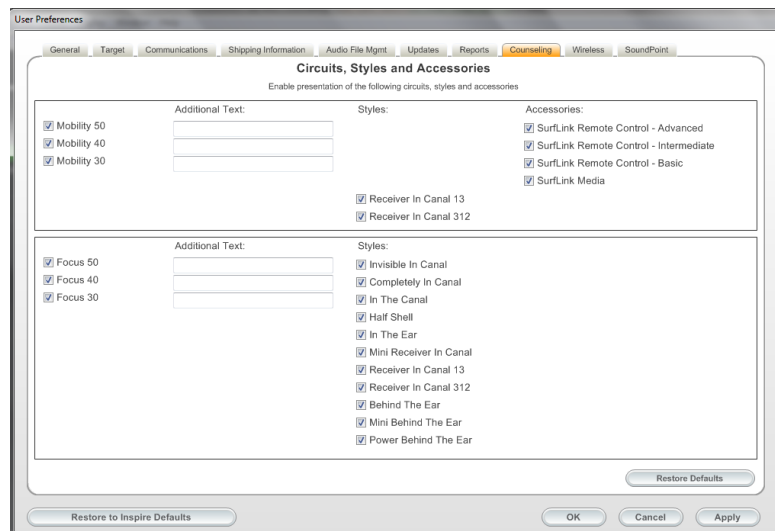
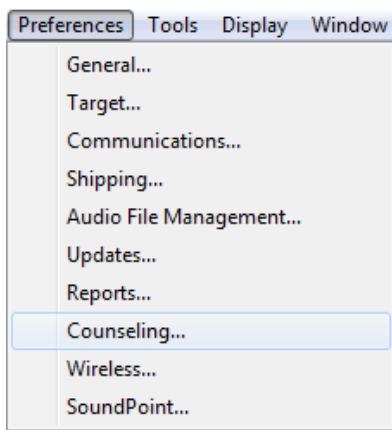


## Setting Preferences for the Counseling Tools

Inspire allows personalization of the technology levels and styles displayed in **Lifestyle Solutions**. By default, all available product levels and models are considered in the recommendation process. To change the levels and/or styles displayed, select **Counseling** from the **Preferences** menu at the top left of the screen.



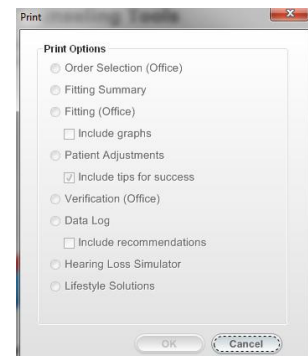
## Preferences: Hearing Loss Simulator

The Hearing Loss Simulator demonstrates the effects of a hearing loss using a variety of sounds and audiogram presets. Different display options, visual aids, and drawing tools have been added to assist in the counseling process and to help facilitate patient understanding of the impact of a hearing loss on specific environmental and speech sounds.

To print a report for **Hearing Loss Simulator**, click the print icon on the top toolbar.

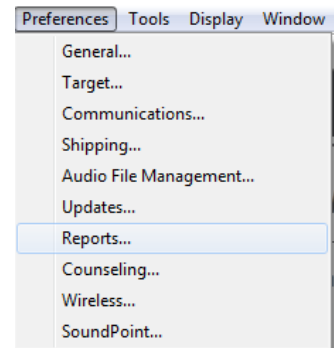


Select the radial button to the left of **Hearing Loss Simulator**. Click **OK** on the **Print** window.



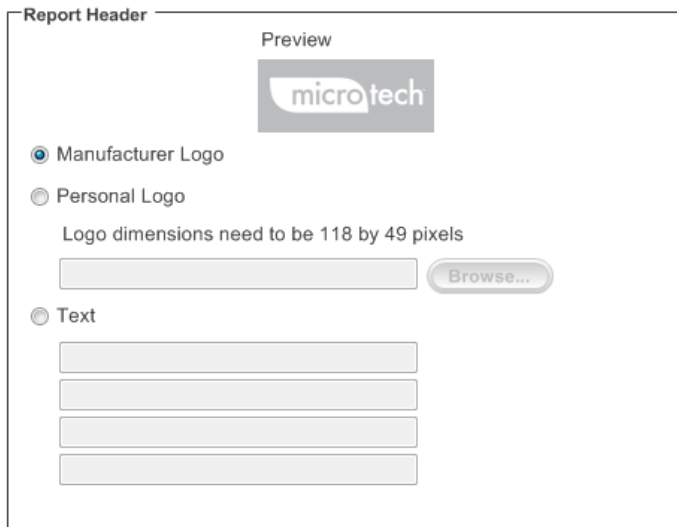
## Setting Preferences for Printed Reports

Inspire provides the ability to print the following types of reports: Order Selection, Fitting Summary, Patient Adjustments, Fitting Verification, Data Log, Hearing Loss Simulator, and Lifestyle Solutions. In order to print the Lifestyle Solutions report, the patient questionnaire must be completed. The printed report may be customized from the Reports menu under Preferences. Customizing the report preferences will influence all printed reports.



Inspire provides three options under Report Header. This information is displayed on the top left of each printed report:

- 1) **Manufacturer Logo:** Default
- 2) **Personal Logo:** A customized logo uploaded from your computer
- 3) **Personalized Text:** Up to four lines of text on all printed reports, which can include address information



Reports Preferences Screen

This preference is stored in the Inspire software defaults and only needs to be entered once. This customization will print on every report generated from within Inspire.

*\*Please note that there are size restrictions on the logo. The logo uploaded to Inspire must meet these restrictions or an error message will be displayed.*