

Pediatric Auto Path

Inspire® includes two different Auto Path routines: Adult and Pediatric. Birth dates must be entered into the patient database for the appropriate Auto Path to be launched. If no birth date is entered, it will default to the Adult Auto Path.

Since children are a special population, there are three age-specific Pediatric Auto Path routines. Each incorporates the steps that are appropriate for the specific age group. The age groups were selected after reviewing current pediatric amplification literature and the DSL v5 age-group criteria.

Group 1: Birth – 4 Years

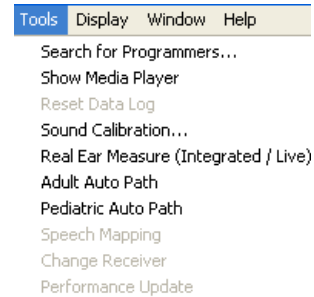
- Steps include: Live Real Ear, Best Fit, and Reset Data Log.
- The Strategic Feedback Control icon is not available for this group because the filter is optimized for age, without introducing the initialization tone. This avoids the possibility of delivering an overly intense signal to the small ear canal in this age group.

Group 2: 5 – 12 Years

- The Strategic Feedback Control icon is available, but grayed out by default. The professional has the option of including it in the Auto Path routine by clicking on the icon (changing it from gray to orange). For this age group, the ear canal is usually large enough that the intensity of the initialization tone will not be perceived as excessively loud. A customized filter is recommended, but inclusion is determined by the professional.

Group 3: 13 - 17 Years

- As described for Group 2, the professional has the option to include the Strategic Feedback Control Initialization step in the Auto Path routine.



Please refer to the [Auto Path Tech Tip](#) for general information regarding Auto Path.

