
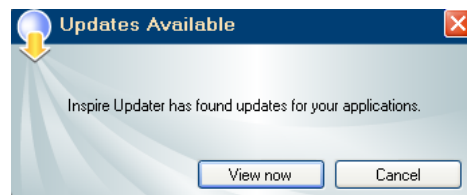


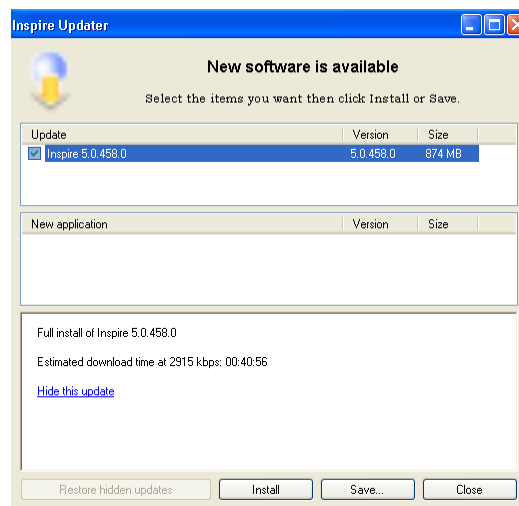
Inspire® Updater

Micro-Tech provides a unique way to update programming software. *Inspire Updater* is included as an automatic add-in during the software installation process to ensure that each office maintains the most current version of software available. Micro-Tech's global servers are a fast, convenient way of providing software updates. After installing Inspire, the Inspire Updater icon  will load in the system tray on the bottom right. If the PC is connected to the Internet, Inspire Updater will search for and retrieve full versions or updates of Inspire automatically on system start-up. When available, a window will appear to notify you of new updates. By default, automatic Inspire updates are enabled within Inspire Preferences.



Automatic Update screen

By selecting **View Now**, a window will display available files, the size, and the approximate download time. The download time indicated is cumulative. In other words, complete installation of a full version of Inspire may require a longer period of time but does not need to be downloaded at one time. If the download is interrupted, it can be resumed at any time and will continue where it left off. The software will provide status of download and indicate when the process is complete. All downloads will run in the background and not disrupt other computer processing. When the download is complete the software installation must be started manually.

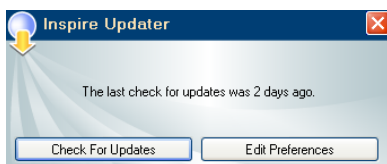


Software Update screen

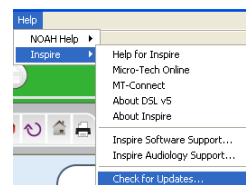
Inspire Updater - Manual Configuration

Although activated by default, if the *Inspire Updater* is not set to automatically check for updates, it can be

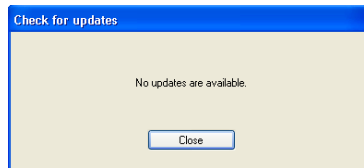
checked manually both from within Inspire software and from outside of the software. If Inspire is closed, use the *Inspire Updater* icon located in the system tray on the bottom right to check for updates. Double click on the *Inspire Updater* icon in the system tray to display the status pop-up window. The window will indicate the last time there was a check for software updates. If the Updater icon is not visible in the system tray, it can be accessed by going to **Start → Programs → Startup → Inspire Updater**. This will start **Inspire Updater** and it will be visible in the system tray. Additionally, a right click on the Updater Icon in the system tray allows access to all of the same **Updater Settings** without opening Inspire software. If Inspire is already opened, the professional can check for available software updates within the Inspire **Help** menu. If there are any updates available, the Software Update screen will be displayed.



Manual Update screen using the Updater icon

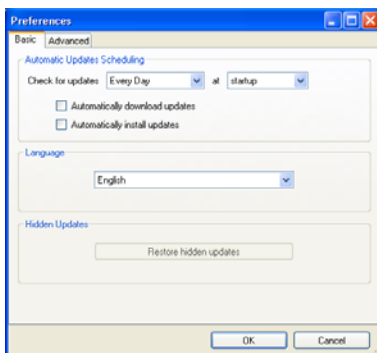


Check for Updates from Help menu

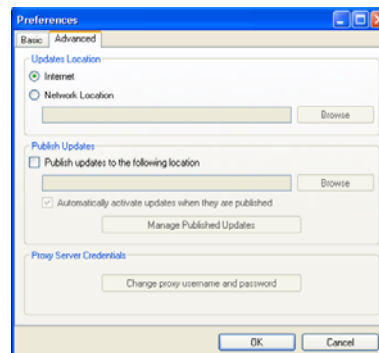


Message displayed when no updates are available

The Inspire Updater process can be further personalized by each location. Select **Edit Preferences** within the Inspire Updater menu to customize the frequency and timing of the updates under Basic Preferences and the location and storage options under Advanced Preferences. This is particularly helpful for offices using network servers.



Basic User Preferences screen



Advanced User Preferences screen