

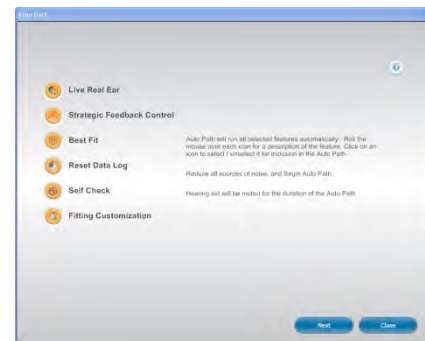
## Auto Path

Auto Path is the automated fitting wizard that facilitates quick and easy completion of all the necessary steps for a successful initial fitting. Available steps in the sequence are based on the technology level of the hearing aids connected.

*Tip: For patient comfort, we recommend not inserting the hearing aid in the patient's ear until after Auto Path is launched.*

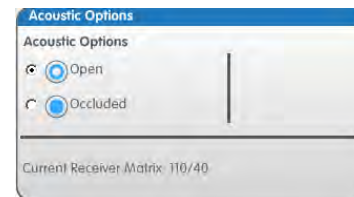
## Steps for Auto Path

1. Auto Path launches automatically upon connection of any new instrument.
2. Orange icons represent steps that will be completed as part of the Auto Path routine. Gray icons are steps that will not be completed. Click on an icon to select or deselect it for inclusion in the Auto Path routine. It is recommended to select all icons for inclusion in the Auto Path routine.



3. Click **Next** to start the Auto Path routine.

- a. If the connected instrument is a Receiver-In-Canal (RIC) or Behind-The-Ear (BTE), the Acoustic Options dialog box will appear.
- b. Choose the appropriate option to ensure that the frequency response displayed reflects the correct coupling. (This step is bypassed when custom products are being fit.)
- c. If a SmartTouch™ Technology BTE is the connected device, the SmartTouch Control Settings dialog box will have already been launched *prior to* Auto Path to configure the functionality of the SmartTouch Control Surface.

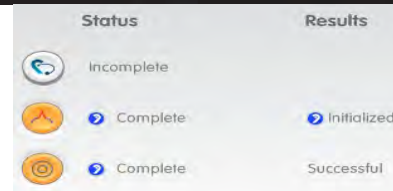


4. Click **Begin** to view the style-specific instructions for assembling the Live Real Ear Measurement, if Live Real Ear Measurement is selected for inclusion in Auto Path.



5. Click **Next** to begin the measurement. When the real-ear measurement is completed, the prompt to remove the probe tube and real-ear accessories will appear.

- 6 . Click **Next** to complete the remaining steps.
  - a. As each step is running, there will be an animation to the left of the icon.
  - b. All successfully completed steps will be represented as "Complete" under status. Any step that was deselected will have "Incomplete" displayed under status.



- 7 . Choose the **Experience Level** most appropriate for the patient.



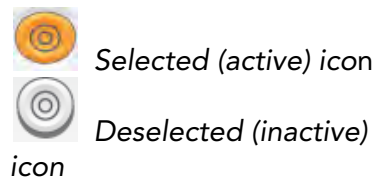
- 8 . **Integrated Speech Mapping** can be launched by clicking on the icon at the bottom of the completed Auto Path screen. Refer to the **Speech Mapping Tech Tip** for more information.



- 9 . Click **Close** and the initial fitting screen will be launched. The initial fitting screen most likely will be **Quick Fit**.

## Customizing Auto Path

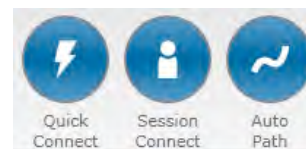
Any step can be bypassed by deselecting it with a click of the mouse. A selected step for inclusion in Auto Path will be orange and a deselected step will be gray. If running Auto Path following a repair, deselecting all steps except Live Real Ear Measurement, Strategic Feedback Control initialization, and Self-Check baseline (if applicable) is recommended.



*Automatic launch of Auto Path* can also be disabled in the Preferences menu.

Launch Auto Path on Initial Read

Auto Path can also be accessed manually at any time either from the Get Started screen, fitting toast or from the **Tools** menu.



**Tip:** When a receiver is changed on a RIC device and the **Change Receiver** icon is selected, a customized Auto Path that only includes the necessary steps is launched.